

Class Notes

Creating and publishing web photo galleries using Photoshop and Dreamweaver

DMA 205A

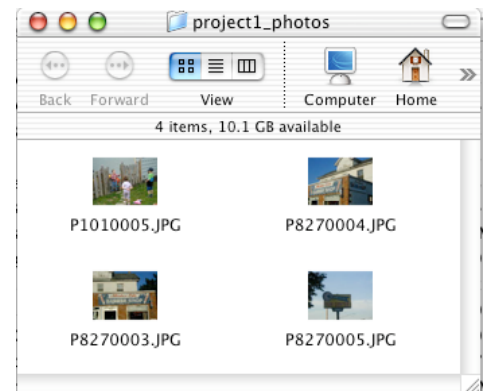
Ben Dunkle, Professor

We will use Photoshop to generate the photo gallery quickly. We will use Dreamweaver to modify and publish the gallery.

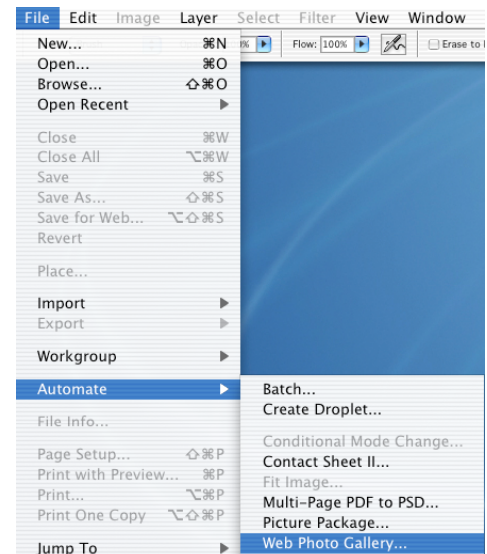
PART 1: Generate the site in Photoshop

1. Make sure all your images are retouched and named in an intuitive manner (unlike mine). Have them ready to go in a folder
2. Open ps and select File>Automate>Web Photo Gallery
3. Select a format for your gallery, add web site information, choose a font, etc. but most importantly, click “Choose” under Folders and select your images folder.

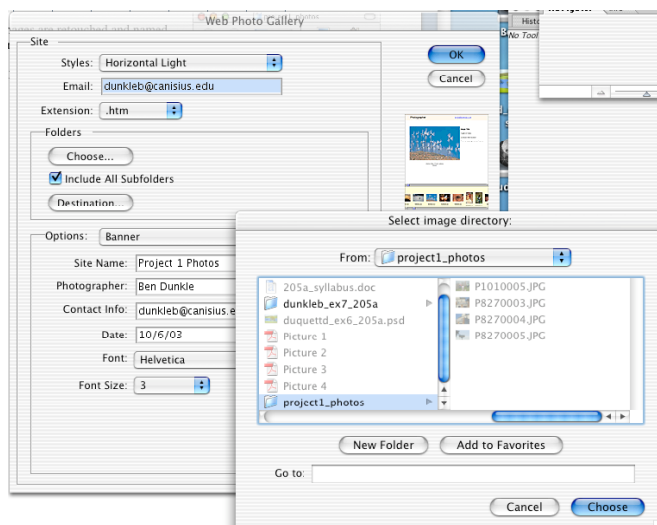
1.



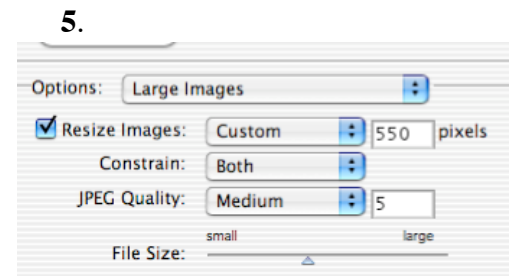
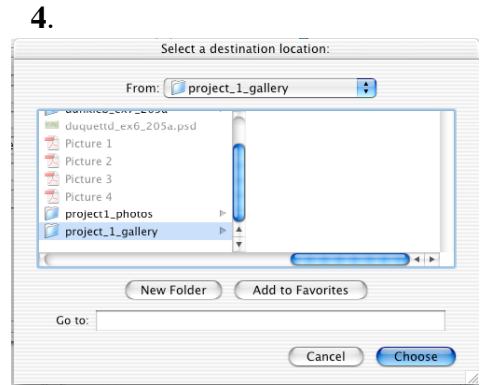
2.



3.



4. Click “Destination” to select a destination for your site. In figure 4, I clicked “new Folder” and created a folder called “project_1_gallery” (notice I didn’t use spaces or capital letters in the name of my folder). **MAKE SURE THE DESTINATION FOLDER IS NOT INSIDE THE “CHOOSE” FOLDER!!!**
5. Under Options, next to “Resize Images”, type in “550” for the pixels.
6. Click OK and get a cup of joe while ps does it's thang.
7. Drag your “project_1_gallery” folder into the “Sites” folder in your Chupacabra folder (that’s a lot of folders...get used to it; the web is all about folders).



PART 2: Publish the site in Dreamweaver.

1. Open DW and select Site>New Site (6)
2. With “Local info” selected in the left column, type in “username_pr1_205_gallery” for the site name (make sure the “Advanced” tab is selected). Click on the little blue folder, and navigate to your gallery folder in your sites folder in your chupacabra folder. Folder. Folderfolderfolder. (7)
3. Select “Remote info” in the left column, and select “Local network” from the drop-down menu. Click the blue folder and do the same thing with the folders as you did in step 2. (8)
4. That’s it! When we’re ready to publish the site, we can adjust Remote Info settings to push the files to a live web server.

