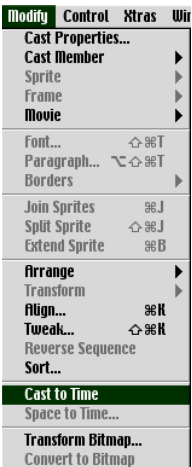
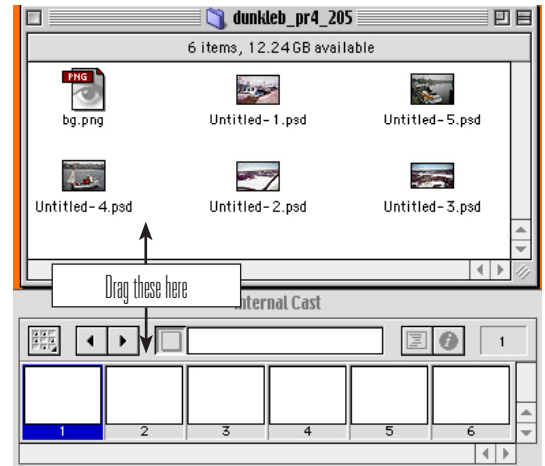
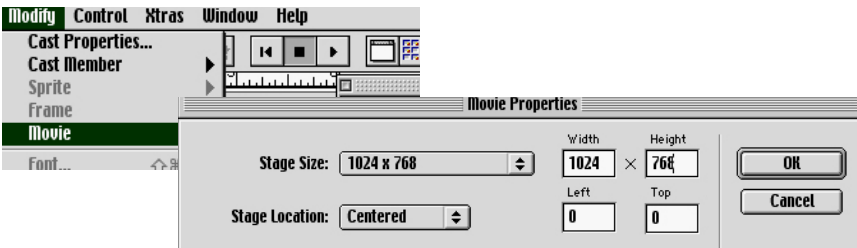


Basic Slideshows in Director | Ben Dunkle

Making a basic slideshow in Director is very easy; here's how to do it. You can start out with the background template and your photos as an individual images, or you can build each slide completely in Photoshop.

Using a background template:

1. Drag the background image (a 1024x768 RGB png) and all of your images into the cast palette in Director.
2. Go to Modify>Movie>Properties, and type 1024x768 into the width and height boxes.

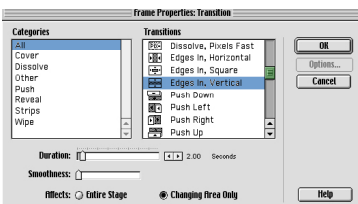


3. Arrange the images in your cast palette so that the background image is the last image in the list of cast members. Highlight all of your images in the cast window EXCEPT the background image, and go to Modify>Cast to Time.



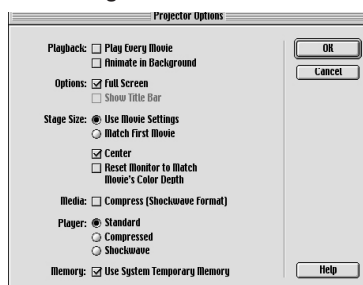
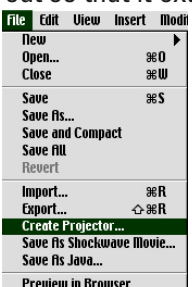
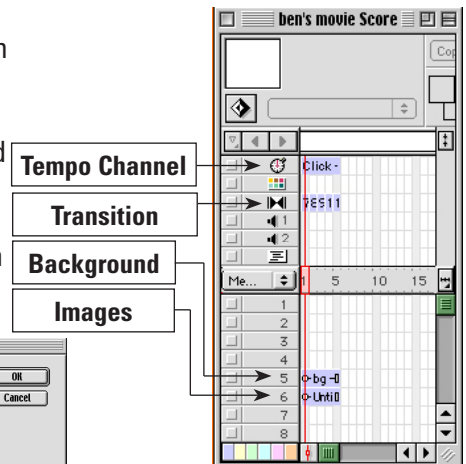
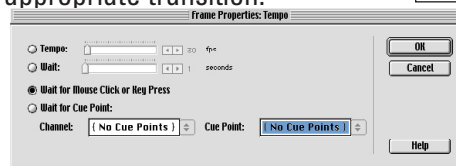
4. Drag the background image from the cast palette into the fifth channel. Spread the sprite out so that it is the same length as the images sprite.

5. Drag the images sprite into a channel below the background sprite.



6. In the transitions channel, double click in each frame to bring up the frame transitions dialogue box. Select an appropriate transition.

7. Double-click on the tempo channel, and select "Wait for mouse click or key press". Drag this sprite out so that it extends the length of the show.



8. Go to file>create projector, click on options and select fill screen from the dialogue box that comes up. Click OK. Find your Director file and click "Add" to tell director to make it into a projector. Name your projector file dunkleb_pr4_205 and you're done. This is the file you'll give me for the project; don't give me the director source file.

